

installation instruction

cubicle type VK13

required tool:

- Drilling machine with various masonry and HSS drill bits
- Cordless screwdriver
- Spirit level, laser
- Circular hand saw or jigsaw
- Standard tools
- Cross-cut saw with aluminium saw blade
- Cordless pop riveter
- Scissors jack

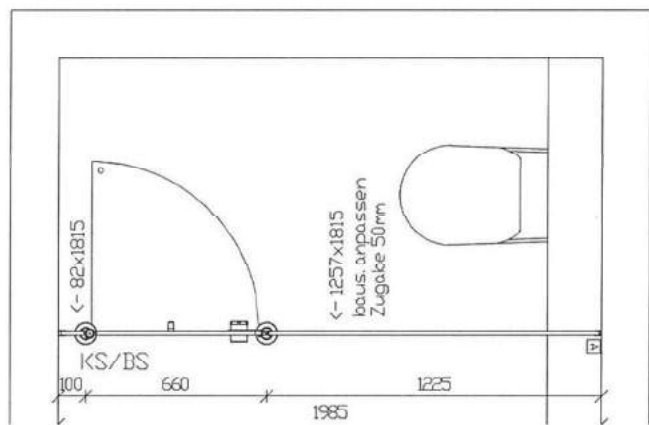
Assign the panels to the drawings

F54893 (0954893)

Obi Baumarkt 92637 Weiden

WC Herren OG

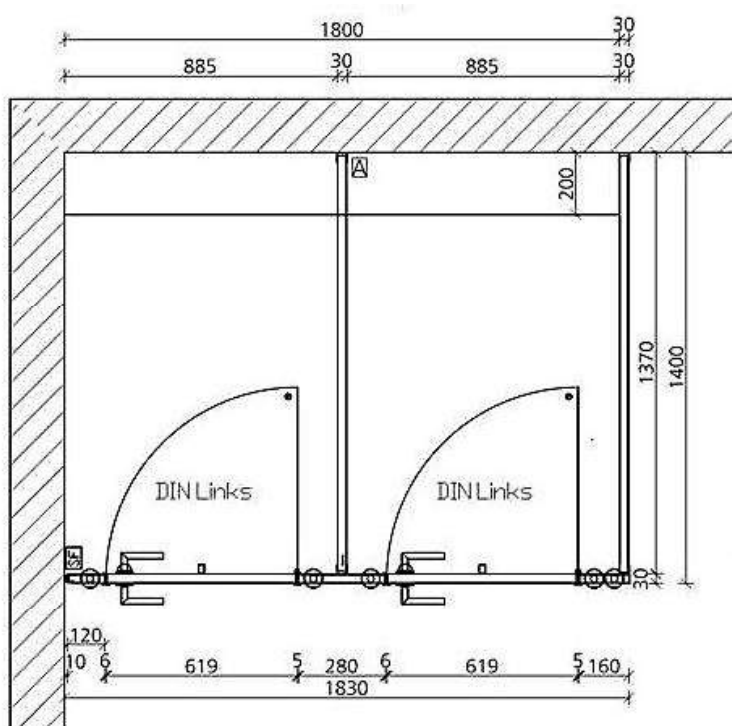
WC Herren EG
Raum T 0.07.2



On the left side, you can see the sticker which is on the panels delivered to you. On the right, you can see the drawing of the corresponding cubicle. The sticker shows the order number, the designation of the cubicle interior part (here "end pilaster") and the size of the cubicle part (here 1837 mm x 185 mm). On the drawing you find this end pilaster on the left side of the door.



So schön kann Trennung sein.



Production drawing of a 2-cabin system with side wall.
This variant is presented to you in this manual.

1. Marks for the wall connections:

- You can take the axis dimensions and the dimensional chain of the front section from the production drawing. If no axis dimensions are given, please refer to the axis dimensions of the toilet pans. Now transfer the dimensional chain from the drawing to the floor.
- Place the wall connection profiles vertically on the axes of the front section, partition and side wall and draw a vertical line with the laser or spirit level.



- At one point, draw the length of the wall connection profile, plus 150 mm. Use the laser to transfer the upper edge of the profile to all the wall connections.



- Then mark the drill holes of the wall connection profiles on the vertical lines.



2. Drill holes, fix profile

- Drill the marked holes with an 8 mm drill bit. In the process, pay attention to existing wires and pipes.
- Then fix the profile with 8 mm x 51 mm p lugs as well as 5.5 mm x 70 mm counter-sunk screws with 6.4 mm washers.

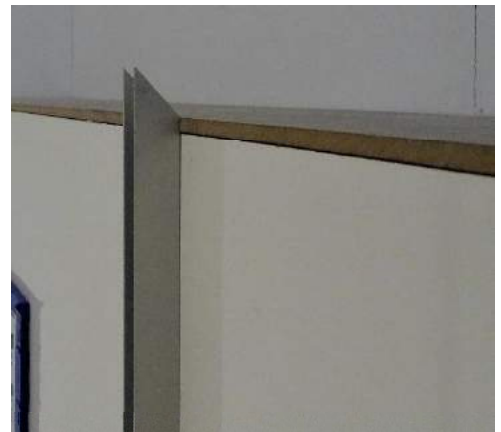


3. Make any required cut-out

- Take the height of the installation wall and subtract the given floor clearance of 150 mm from this dimension. Check whether the brick lining is made in right angle.



- Shorten the mitred pre-cut U-profile to the correct size. Fix the profile with the mitre up, flush with the brick lining.



- Then adjust the short mitre profile and fix it on top of the installation wall.



- Now adjust the remaining piece of the long U-profile to the height of the system, set it obtusely on the profile and fix it on the wall. For cubicles in a row, where several cut-outs have to be done, the height of the wall connection profiles should be aligned with a laser.



- Transfer the cut-out dimension with the addition of 5 mm clearance to the partition wall and make the cut-out with a circular or jigsaw.



4. Aluminum feet mounting

- Draw the axes.



- Drill on the marked axes (centre hole of the feet) with an 8 mm stone drill, 60 mm deep into the floor. Fix the feet with 8 mm x 40 mm plugs and 5.5 mm x 45 mm Liko screws with washer. Glue the feet additionally with "klebt und dichtet" (sticks and seals) glue.



5. Inserting the dividing and side wall

- Apply a strip of silicone in the wall connection profiles.



- Now insert the dividing wall and the side wall into the aluminum profile.



- Maintain the walls with lifting jacks and adjust the height of the walls.



- Use a spirit level or laser to check if the walls are perpendicular.



6. Prepare drill

- To avoid transfixing insert a wooden or plastic plug onto a 4.2 mm drill bit and fix it so that the drill head only protrudes 11 mm out of the plug.



7. U-profile on middle pilaster

- Place a U-profile, on the middle pilaster, according to the dimensions shown on the drawing or according to the position of the toilets. Mark the drill holes.
- Pre-drill with the prepared drill.
- Fix the profile with 4.8 mm x 25 mm pan-head screws. The profile on the end pilaster is already screwed on in the factory.



8. Silicone in U-profiles

- Apply a strip of silicone to the inside of the U-profile legs and into the groove of the corner profile



9. Install front parts

- Place the front parts in the U-profile or corner profile towards the middle and side walls.



- If the profiles do not fit exactly into the aluminum feet, you can move them by gentle hitting with a rubber mallet.



10. Insert end pilaster

- Place the end pilaster in the wall connection profile and adjust the height and vertical direction exactly.



11. Fit the covering profile

- Measure the dimension from the wall to the outer edge of the vertical profile.



- Transfer this dimension to the covering profile and cut it on the right side. For cubicles in a row, you have to measure the total width of the room and cut the covering profile on the other side, too.



12. Mounting the covering profile

- Place the covering profile together with the cast corner on the front.



- Screw the profile from above, through the given holes with 5.5 mm x 19 mm Liko screws, into the vertical profiles.



13. Insert doors

a.) Rising hinge:

- The hinges are already factory-mounted on the pilasters. Now screw the lower counter-piece of the hinge on the door leaf.
- Insert the door with the lower hinge.
- Now screw on the middle and top counter-pieces on the hinge. The matching M5 x 12 mm threaded screws are included in the counter-pieces of the hinge.



b.) Finger protection hinge

- Press the lower black plastic rising insert onto the tie plate in the grid provided.
- Insert the upper hinge bracket into finger protection profile.
- Insert the door and screw the barrel hinge with 4.8 mm x 25 mm countersunk screws into the specified holes in the covering profile.



14. Aligning of the system and fixing the feet

- Now check the door clearance and, if necessary, finally adjust the system by slightly moving the middle parts (hitting the rubber mallet against the feet).
- If putting the system in place with stainless steel feet, then drill two holes through the tube, insert a 6 mm plug into the holes and bolt down the system with 4.8 x 32 mm screws.



15. Fixation of the feet

- Drill into the aluminum profile with a 5 mm drill through the counter bore hole in the foot.
- Then rivet foot and profile with a 5 mm x 12 mm stainless steel rivet.



16. Screwing the system together

- Now screw all parts together with the U-profiles (pre-drilling with 3.2 mm drill).
- Use 3.9 mm x 13 mm cap screws for screwing.



- Cover all screw heads with the coloured caps.



17. Fixing the covering profile on the side wall

- Now find out the exact length of the coverprofile.



- Cut the covering profile for the side wall to the right length.



- Now place the covering profile on the side wall.

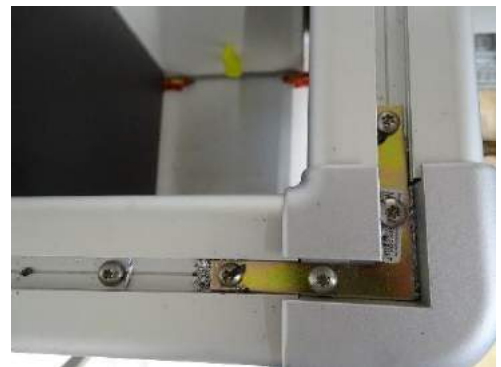


- Use a 4.2 mm drill bit to drill through the holes in the cover at least 50 mm deep into the high pressure laminate board. Fix the covering profile with 4.8 mm x 45 mm Liko screws.



18. Screw on corner

- In corner systems, the covering profiles are connected with a cast corner and additionally fixed with an angle from above. Predrill deep enough through the holes in the angle with a 4.2 mm drill bit and fix the corner with 4.8 mm x 45 mm Liko screws.



19. Fitting one-hand door knobs

- The VK 13 system type can be fitted with different variants of one-hand door knobs. The accordingly installation instructions are enclosed with the packaging unit.

20. Fitting coat hooks and buffers

- Mark the coat hook on the inside of the door. (300 mm from top edge, in the middle of the door).



- Pre-drill with a 3.2 mm drill bit with depth stop, 11.5 mm deep



- Fix on the hook with the screws delivered.
Make sure the hook is straight.



- Glue the door buffer with HB45 construction adhesive.



- Secure the buffer against slipping with a strip of adhesive tape.

